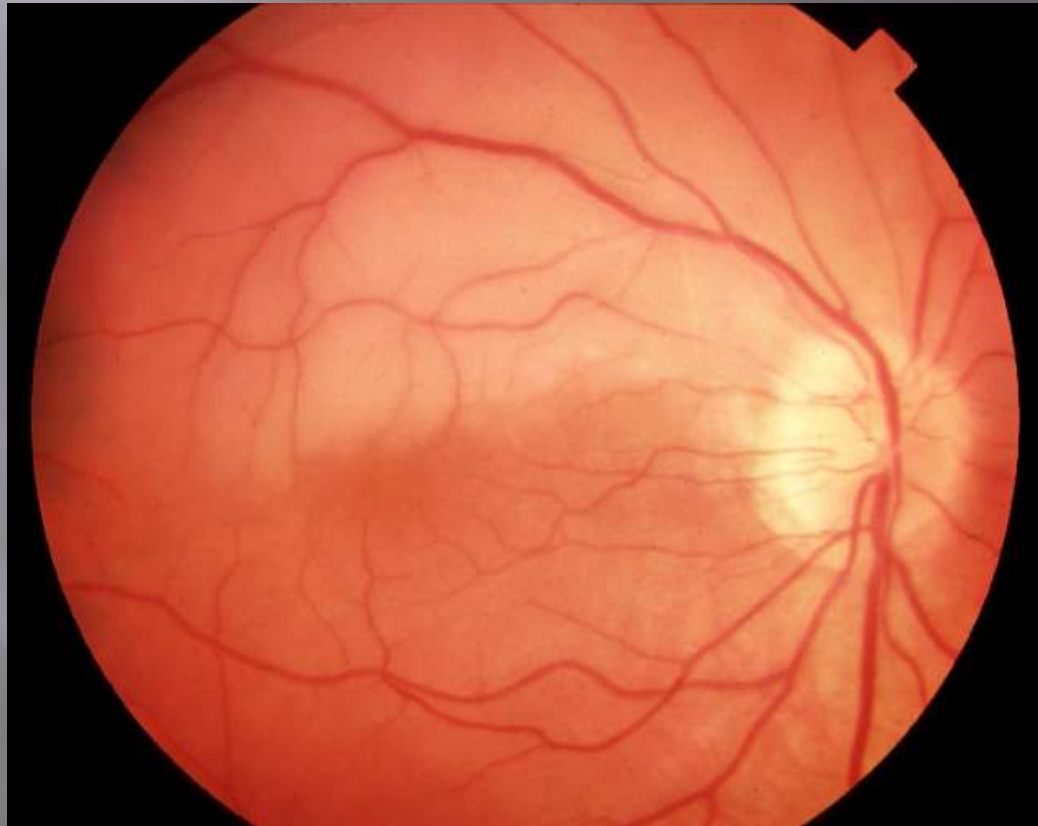
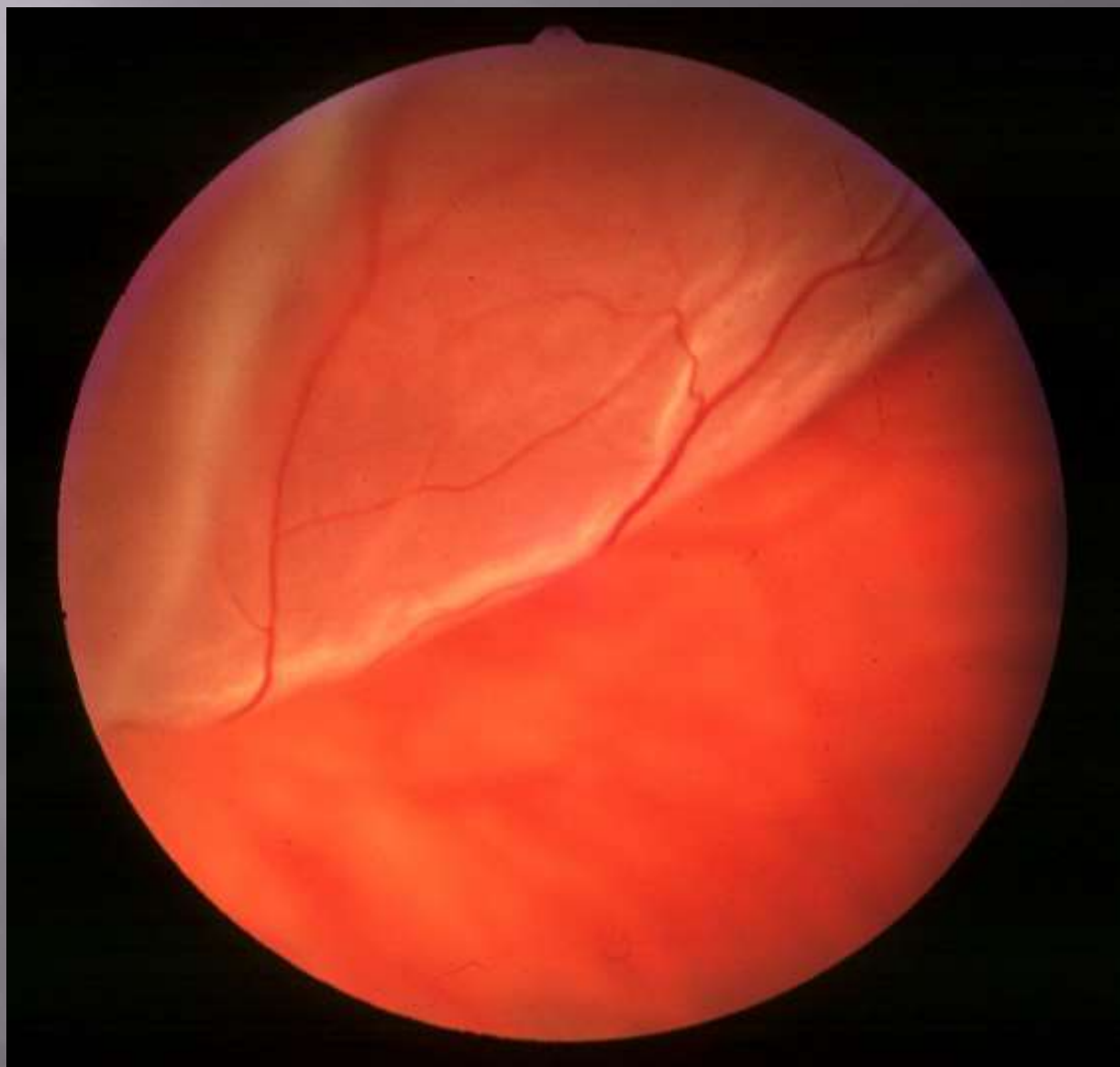


Upper half of visual field went suddenly in one eye: arterial or venous obstruction



Dark curtain in front of one eye, coming from below; varies with head position - upper half retinal detachment



Examination

Visual Acuity ▣

Central vision ■

Macula ■

Best corrected ■

T

6/60 [20/200] Approximate vision for partial sighted registration; only able to see top letter from 6 metres

Y O

6/36 [20/120]

V U H

6/24 [20/80]

M Y T A

6/18 [20/60]

H U W O X

6/12 [20/40]

O X T V U Y

6/9 [20/30] Approximate level of acuity for driving

T Y H M I W A

6/6 [20/20] Normal distance vision at 6 metres

A M O T W U V X

6/5 [20/17]

External examination ▣

Lids •

Misalignment •

Redness •

Corneal opacity •

Perkinje Sanson images

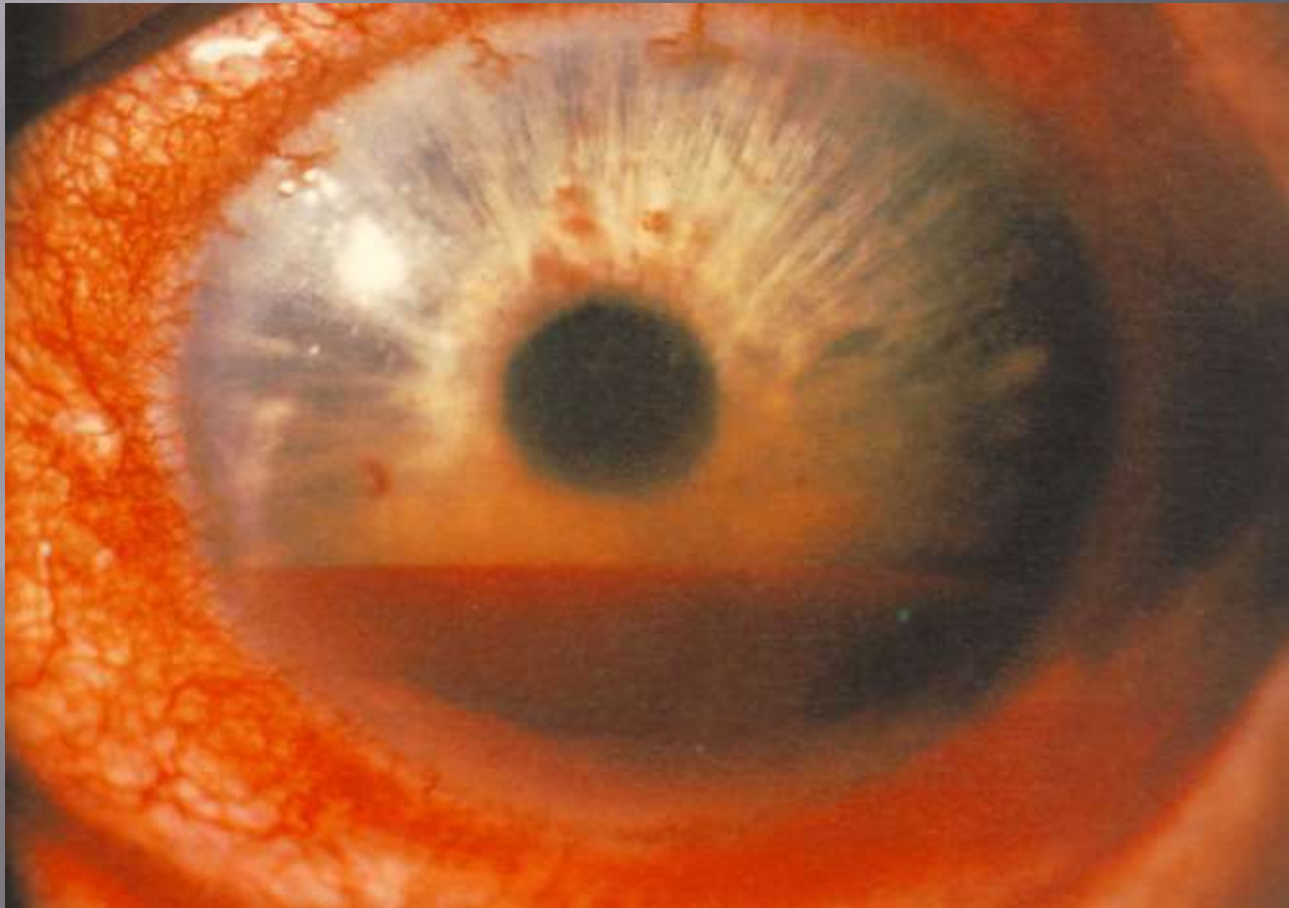
1st image: anterior corneal surface □

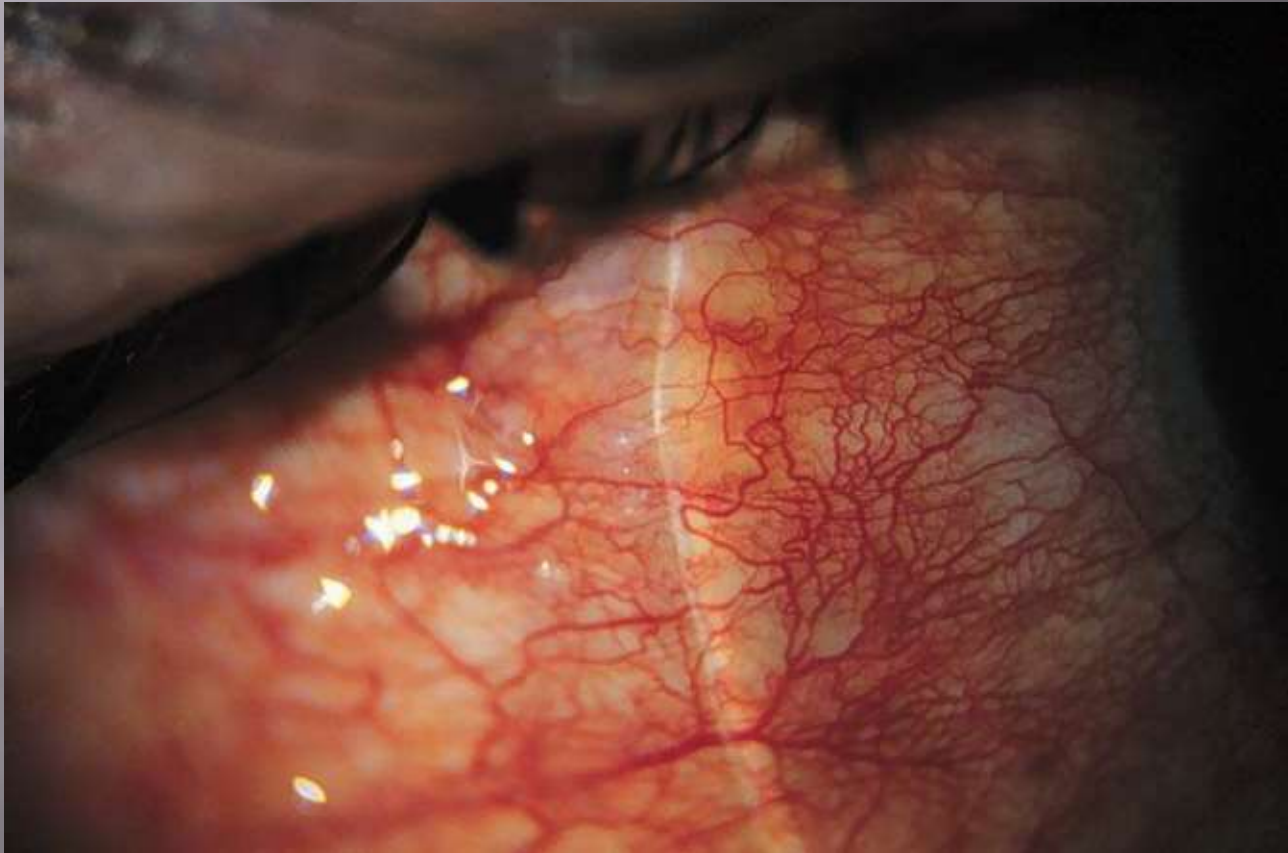
2nd image: posterior corneal surface □

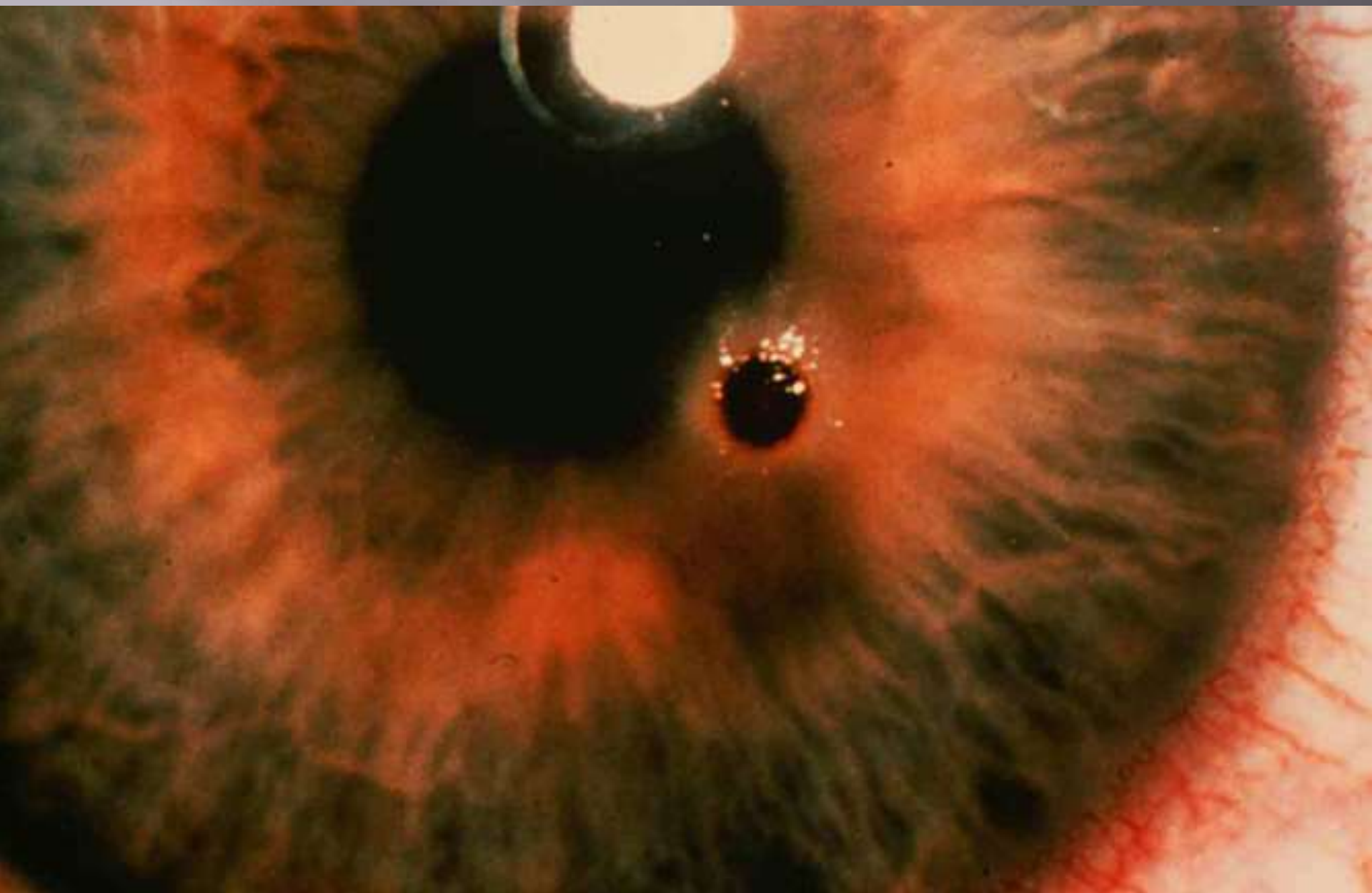
3rd image: anterior lens surface □

real, against 4th image: posterior lens surface, □
movement









stains

Fluorescein stain □

Rose bengal □